

## Screening centres

### Eastern Health and Social Services Board

The Screening Centre  
12-22 Linenhall Street, Belfast BT2 8BS  
Tel: 028 9033 3700

### Northern Health and Social Services Board

Northern Area Breast Screening and Assessment Unit  
Level A, Antrim Area Hospital  
45 Bush Road, Antrim BT41 2RL  
Tel: 028 9442 4425

### Southern Health and Social Services Board

The Breast Screening Unit  
Lurgan Hospital  
Sloan Street, Lurgan BT66 8NX  
Tel: 028 3834 7083

### Western Health and Social Services Board

The Breast Screening Unit  
Ground Floor, The Nurses' Home  
Altnagelvin Area Hospital  
Glenshane Road, Londonderry BT47 6SB  
Tel: 028 7161 1443

For information on breast screening in Northern Ireland see  
[www.cancerscreening.n-i.nhs.uk](http://www.cancerscreening.n-i.nhs.uk)

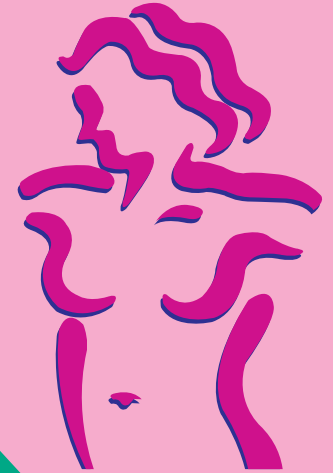


**Health**  
Promotion  
Agency

Designed and produced by the Health Promotion Agency  
for Northern Ireland on behalf of the Department of Health,  
Social Services and Public Safety.

11/07

# Breast screening



## What to expect at your second visit

### ● Why have I been called back for a second visit?

You have been invited to attend a breast assessment clinic, which is a continuation of the screening system. About 1 in every 20 women need to return for further tests after a breast x-ray (mammogram). This does not necessarily mean that there is anything wrong - 4 out of 5 women recalled are given normal results following these tests.

### ● What happens at a breast assessment clinic?

The reason for the visit will be explained to you when you come to the clinic. You will be asked about any breast problems and given a chance to ask questions. A number of tests may then be carried out. These include:

- an examination of your breasts by a doctor;
- breast x-rays - mammograms showing different views of your breast;
- ultrasound - a painless scan which shows a picture of the tissues within the breast;
- cytology - a few cells may be removed from your breast with a very fine needle and examined under a microscope. This test is similar to having blood taken;
- a biopsy - a small area of breast tissue may be removed and examined under the microscope. This is carried out under local anaesthetic.

You may not require all of these tests. During these tests a female member of staff will be with you.

### ● How long will the visit take?

Please be prepared to spend at least 2 hours at the clinic, although this is not always necessary.

### ● Can I bring someone with me?

We would encourage you to bring your partner, a relative or a friend.

### ● When do I get my results?

Depending on the tests you will either be told your results before you leave or you will be asked to return in a week's time for the results. If you require further treatment the options will be fully explained to you.

### ● Who can I talk to if I have any further questions?

Your local breast care nurse would be happy to answer any questions.

**Your local breast care nurse is:**

**Name:** .....

**Tel:** .....

